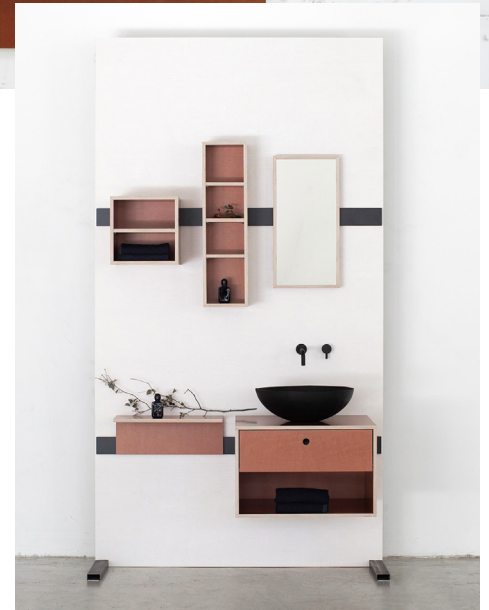




IDA Hanging bathroom modules



LUIS, the flexible hanging modular system has a twin sister named IDA – an adjustable and compact solution for the bathroom.



IDA Hanging bathroom modules

One to two wooden panels are screwed to the wall and act as the base for the rest of the system. The cupboard and shelf modules can be hung up on the panels and easily moved around and adjusted. The modules are also adjustable in height, as each module is equipped with their two different height slots at the back. The individual modules are available as shelves or cabinets, with or without doors, in different standard sizes. Upon request, modules can also be made to order.

To produce IDA, we use colour varnished birch plywood panels that have been coated with a melamine resin. The translucent, coloured surface emphasizes the grain of the wood, and is odourless and easy to clean. IDA is available in the standard colours listed below; other colours are available upon request.

Produced in Welsberg, South Tyrol.

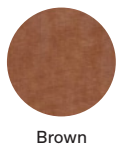
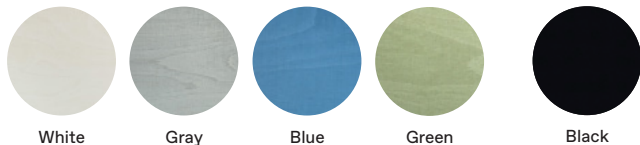
Concept & Design: Georg Agostini, Lorenz Sternbach

IDA Specifications

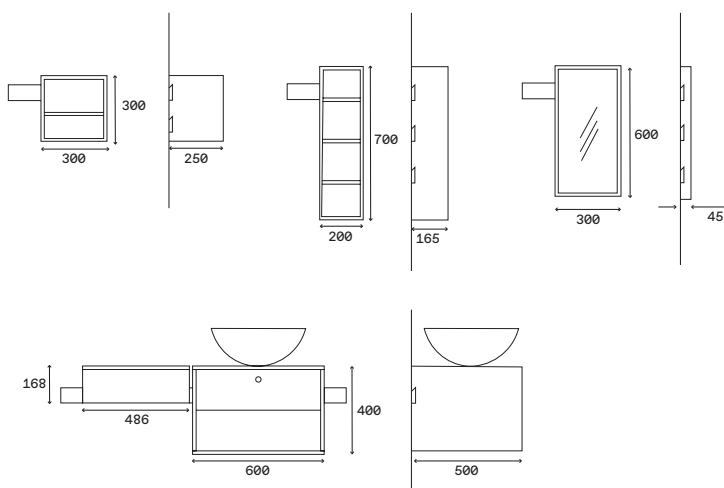
Modular shelving system for the bathroom – customizable and adjustable. The hanging modules can be moved around (up and down and side to side) and repositioned easily. Various standard modules are available (standard widths: 60, 49, 30, 20 cm). Upon request, modules can also be made to order.

IDA Materials

- Birch plywood
- High-pressure laminate



IDA Measurements



IDA Front view & side view

